



# HOLIDAY LET

## BASIC SPECIFICATIONS

Size: 201 x 201 x 84cm  
 Jets: 31  
 Litres: 1249  
 Pump: 1 Gecko™ EU / 3.0 HP  
 Electrical: 13 amp & 32 amp  
 Water Flow: 225 GPM / 110 GPM

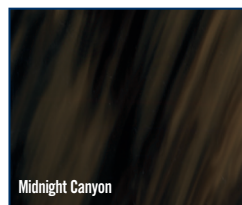
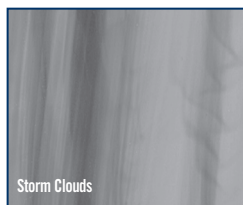
## CAPACITY



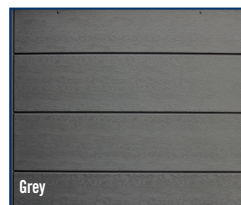
## STANDARD FEATURES

Waterway™ Orion Jets	RMAX® Insulation Panels
Gecko™ YE Class Pack	Heater
Gecko™ K120/330 Digital Topside Control	Confer™ Gray Maintenance Free Skirting
SimpleClear UV-C WP	Single Master Massage Footwell Jet
2KW Heater	ABS Bottom-Wrap
Gecko™ EU Pump	10-5cm Cover - Standard
4.6M² Filtration	* White Jets on Silver Marble
Circulation Pump	Black Jets with Midnight Canyon and Storm Clouds

### Acrylic Color Options



### Confer Skirting



\*BLACK STAINLESS STEEL JETS



\*WHITE STAINLESS STEEL JETS



CHEMICAL FEEDER



USER FRIENDLY TOPSIDE CONTROL



RMAX® INSULATION PANELS



Lucite SPA



Waterway

Dynasty Spas reserves the right to change product selections and/or make product modifications. Your Dynasty Spa Dealer/Contractor is an independent business person and not an agent or employee of Dynasty Spas or any of its subsidiaries. Neither Dynasty Spas nor its subsidiaries accept any responsibility for any representations, statements or contracts made by any Hot Tub Dealer/Contractor.

Note: Color samples shown are representations of actual color, but are for identification only. Because the color may vary, Dynasty Spas does not guarantee that this color will be an exact match to the image shown.



SUPERIOR SPAS



HSG282 COMPLIANT



# CHICAGO LOUNGE

## BASIC SPECIFICATIONS

Size: 234 x 234 x 91cm  
 Jets: 43  
 Litres: 1495  
 Pumps: 3 Gecko™ EU / 3.0 HP  
 Electrical: 32 amp  
 Water Flow: 225 GPM / 110 GPM

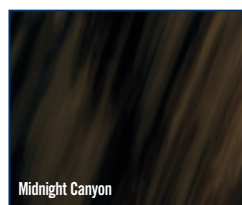
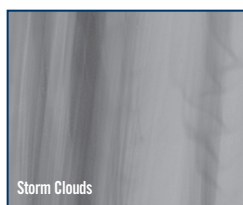
## CAPACITY



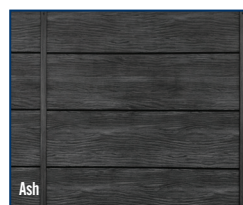
## STANDARD FEATURES

Waterway™ Illuminated Orion Jets	Gecko in.Stream™ Audio System with Transducers
Gecko™ YT Class Pack	Heater
Gecko™ K1000 Digital Topside Control	Waterfalls
SimpleClear UV-C WP	"Elite" Ash Maintenance Free Skirting
Gecko in.Mix™ LED Lighting	Illuminated Skirt Corners
Gecko™ EU Pumps	Dual Master Massage Footwell Jets
9.29M² Filtration	ABS Bottom-Wrap
RMAX® Insulation Panels	15-10cm Cover - Standard
Grey Padded Headrests	

### Acrylic Color Options



### Elite Skirting



Lucite SPA



Waterway

Dynasty Spas reserves the right to change product selections and/or make product modifications. Your Dynasty Spa Dealer/Contractor is an independent business person and not an agent or employee of Dynasty Spas or any of its subsidiaries. Neither Dynasty Spas nor its subsidiaries accept any responsibility for any representations, statements or contracts made by any Hot Tub Dealer/Contractor.

Note: Color samples shown are representations of actual color, but are for identification only. Because the color may vary, Dynasty Spas does not guarantee that this color will be an exact match to the image shown.

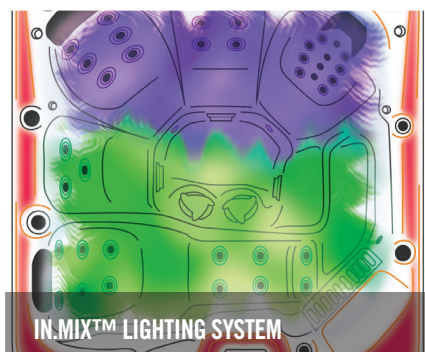
The Bluetooth® word mark and logo are registered trademarks owned by Bluetooth SIG, Inc. Other trademarks and trade names are those of their respective owners



SUPERIOR SPAS



ILLUMINATED STAINLESS STEEL JETS



IN.MIX™ LIGHTING SYSTEM



AIR & WATER DIVERTERS



Bluetooth™

IN.STREAM™ AUDIO SYSTEM



RMAX® INSULATION PANELS



USER FRIENDLY, DIGITAL CONTROLS





# CHICAGO FAMILY

## BASIC SPECIFICATIONS

Size: 234 x 234 x 91cm  
 Jets: 42  
 Litres: 1495  
 Pumps: 3 Gecko™ EU / 3.0 HP  
 Electrical: 32 amp  
 Water Flow: 225 GPM / 110 GPM

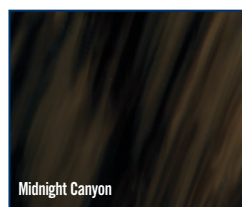
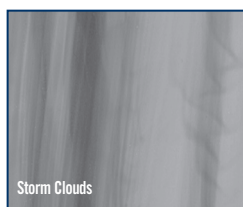
## CAPACITY



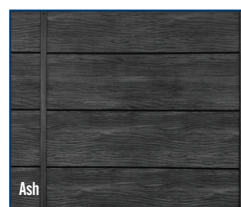
## STANDARD FEATURES

Waterway™ Illuminated Orion Jets	Gecko in.Stream™ Audio System with Transducers
Gecko™ YT Class Pack	Heater
Gecko™ K1000 Digital Topside Control	Fountain Jets
SimpleClear UV-C WP	"Elite" Ash Maintenance Free Skirting
Gecko in.Mix™ LED Lighting	Illuminated Skirt Corners
Gecko™ EU Pumps	Dual Master Massage Footwell Jets
9.29M² Filtration	ABS Bottom-Wrap
RMAX® Insulation Panels	15-10cm Cover - Standard
Grey Padded Headrests	

### Acrylic Color Options



### Elite Skirting



Lucite SPA



Waterway

Dynasty Spas reserves the right to change product selections and/or make product modifications. Your Dynasty Spa Dealer/Contractor is an independent business person and not an agent or employee of Dynasty Spas or any of its subsidiaries. Neither Dynasty Spas nor its subsidiaries accept any responsibility for any representations, statements or contracts made by any Hot Tub Dealer/Contractor.

Note: Color samples shown are representations of actual color, but are for identification only. Because the color may vary, Dynasty Spas does not guarantee that this color will be an exact match to the image shown.

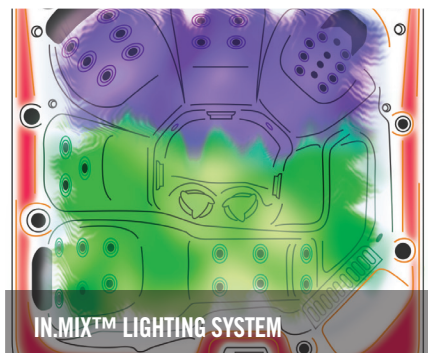
The Bluetooth® word mark and logo are registered trademarks owned by Bluetooth SIG, Inc. Other trademarks and trade names are those of their respective owners



SUPERIOR SPAS



ILLUMINATED STAINLESS STEEL JETS



IN.MIX™ LIGHTING SYSTEM



AIR & WATER DIVERTERS



Bluetooth™

IN.STREAM™ AUDIO SYSTEM



RMAX® INSULATION PANELS



USER FRIENDLY, DIGITAL CONTROLS



# CHICAGO DUAL

## BASIC SPECIFICATIONS

Size:	234 x 234 x 91cm
Jets:	43
Litres:	1495
Pumps:	3 Gecko™ EU / 3.0 HP
Electrical:	32 amp
Water Flow:	225 GPM / 110 GPM

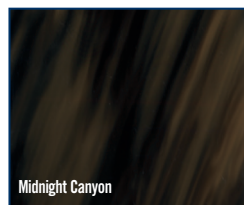
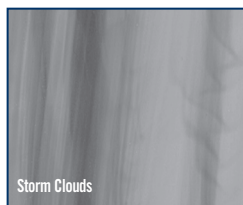
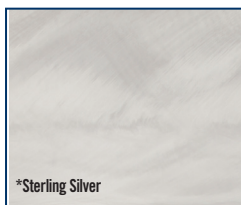
## CAPACITY



## STANDARD FEATURES

Waterway™ Illuminated Orion Jets	Gecko in.Stream™ Audio System with Transducers
Gecko™ YT Class Pack	Heater
Gecko™ K1000 Digital Topside Control	Waterfalls
SimpleClear UV-C WP	"Elite" Ash Maintenance Free Skirting
Gecko in.Mix™ LED Lighting	Illuminated Skirt Corners
Gecko™ EU Pumps	Dual Master Massage Footwell Jets
9.29M² Filtration	ABS Bottom-Wrap
RMAX® Insulation Panels	15-10cm Cover - Standard
Grey Padded Headrests	

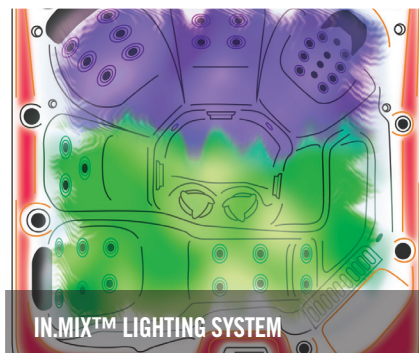
### Acrylic Color Options



### Elite Skirting



ILLUMINATED STAINLESS STEEL JETS



IN.MIX™ LIGHTING SYSTEM



AIR & WATER DIVERTERS



**Bluetooth™**

IN.STREAM™ AUDIO SYSTEM



RMAX® INSULATION PANELS



USER FRIENDLY, DIGITAL CONTROLS



Lucite SPA



Waterway

Dynasty Spas reserves the right to change product selections and/or make product modifications. Your Dynasty Spa Dealer/Contractor is an independent business person and not an agent or employee of Dynasty Spas or any of its subsidiaries. Neither Dynasty Spas nor its subsidiaries accept any responsibility for any representations, statements or contracts made by any Hot Tub Dealer/Contractor.

Note: Color samples shown are representations of actual color, but are for identification only. Because the color may vary, Dynasty Spas does not guarantee that this color will be an exact match to the image shown.

The Bluetooth® word mark and logo are registered trademarks owned by Bluetooth SIG, Inc. Other trademarks and trade names are those of their respective owners



**SUPERIOR SPAS**





# PHOENIX LOUNGE

## BASIC SPECIFICATIONS

Size:	208 x 208 x 91cm
Jets:	45
Litres:	1117
Pumps:	2 Gecko™ EU / 3.0 HP
Electrical:	32 amp
Water Flow:	225 GPM / 110 GPM

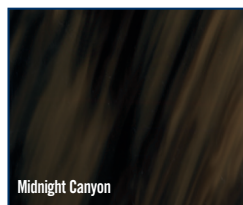
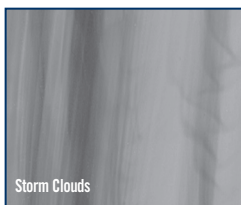
## CAPACITY



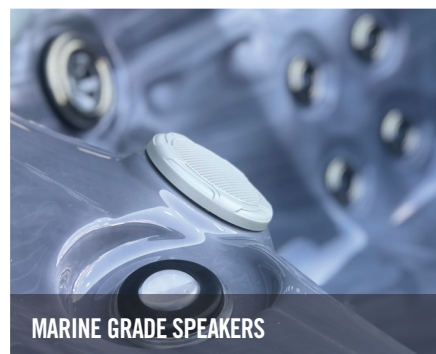
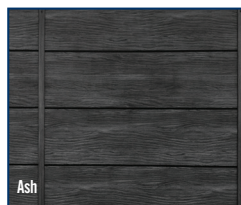
## STANDARD FEATURES

Waterway™ Orion Jets	Bluetooth™ Audio System with Marine Grade Speakers
Gecko™ YE Class Pack	Heater
Gecko™ K506 Digital Topside Control	Waterfalls
SimpleClear UV-C WP	"Elite" Ash Maintenance Free Skirting
20 LED Jewel Lights	Illuminated Skirt Corners
Gecko™ EU Pumps	Single Master Massage Footwell Jet
4.6M² Filtration	ABS Bottom-Wrap
RMAX® Insulation Panels	10-5cm Cover - Standard
Grey Padded Headrests	

### Acrylic Color Options



### Elite Skirting



BLUETOOTH™ AUDIO SYSTEM



RMAX® INSULATION PANELS



Lucite SPA



Waterway

Dynasty Spas reserves the right to change product selections and/or make product modifications. Your Dynasty Spa Dealer/Contractor is an independent business person and not an agent or employee of Dynasty Spas or any of its subsidiaries. Neither Dynasty Spas nor its subsidiaries accept any responsibility for any representations, statements or contracts made by any Hot Tub Dealer/Contractor.

Note: Color samples shown are representations of actual color, but are for identification only. Because the color may vary, Dynasty Spas does not guarantee that this color will be an exact match to the image shown.

The Bluetooth® word mark and logo are registered trademarks owned by Bluetooth SIG, Inc. Other trademarks and trade names are those of their respective owners





# PHOENIX FAMILY

## BASIC SPECIFICATIONS

Size:	208 x 208 x 91cm
Jets:	47
Litres:	1117
Pumps:	2 Gecko™ EU / 3.0 HP
Electrical:	32 amp
Water Flow:	225 GPM / 110 GPM

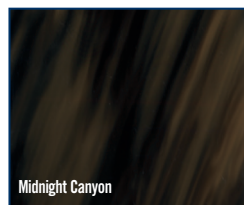
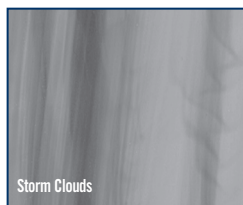
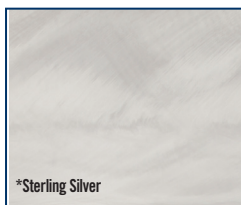
## CAPACITY



## STANDARD FEATURES

Waterway™ Orion Jets	Bluetooth™ Audio System with Marine Grade Speakers
Gecko™ YE Class Pack	Heater
Gecko™ K506 Digital Topside Control	Waterfalls
SimpleClear UV-C WP	"Elite" Ash Maintenance Free Skirting
20 LED Jewel Lights	Illuminated Skirt Corners
Gecko™ EU Pumps	Single Master Massage Footwell Jet
4.6M² Filtration	ABS Bottom-Wrap
RMAX® Insulation Panels	10-5cm Cover - Standard
Grey Padded Headrests	

### Acrylic Color Options



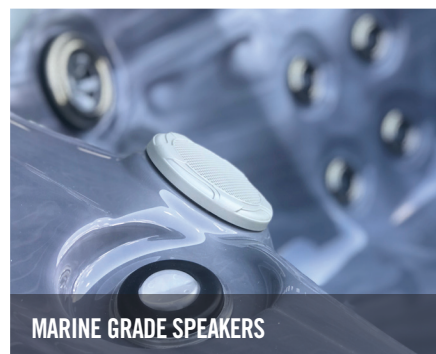
### Elite Skirting



STAINLESS STEEL JETS



WATERFALLS



MARINE GRADE SPEAKERS



BLUETOOTH™ AUDIO SYSTEM



RMAX® INSULATION PANELS



Lucite SPA



Dynasty Spas reserves the right to change product selections and/or make product modifications. Your Dynasty Spa Dealer/Contractor is an independent business person and not an agent or employee of Dynasty Spas or any of its subsidiaries. Neither Dynasty Spas nor its subsidiaries accept any responsibility for any representations, statements or contracts made by any Hot Tub Dealer/Contractor.

Note: Color samples shown are representations of actual color, but are for identification only. Because the color may vary, Dynasty Spas does not guarantee that this color will be an exact match to the image shown.

The Bluetooth® word mark and logo are registered trademarks owned by Bluetooth SIG, Inc. Other trademarks and trade names are those of their respective owners



USER FRIENDLY, DIGITAL CONTROLS





# DALLAS LOUNGE

## BASIC SPECIFICATIONS

Size:	208 x 208 x 91cm
Jets:	32
Litres:	1117
Pump:	1 Gecko™ EU / 3.0 HP
Electrical:	13 amp
Water Flow:	225 GPM / 110 GPM

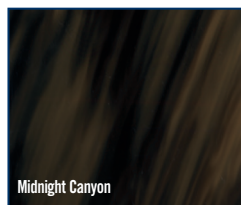
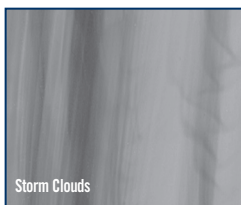
## CAPACITY



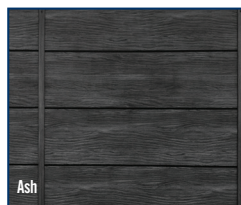
## STANDARD FEATURES

Waterway™ Orion Jets	Grey Padded Headrests
Gecko™ YE Class Pack	Bluetooth™ Audio System with Transducers
Gecko™ K362 Digital Topside Control	Heater
SimpleClear UV-C WP	Waterfalls / Fountain Jets
2KW Heater	"Elite" Ash Maintenance Free Skirting
Gecko™ EU Pump	Single Master Massage Footwell Jet
4.6M² Filtration	ABS Bottom-Wrap
RMAX® Insulation Panels	10-5cm Cover - Standard

### Acrylic Color Options



### Elite Skirting



Lucite SPA



Waterway

Dynasty Spas reserves the right to change product selections and/or make product modifications. Your Dynasty Spa Dealer/Contractor is an independent business person and not an agent or employee of Dynasty Spas or any of its subsidiaries. Neither Dynasty Spas nor its subsidiaries accept any responsibility for any representations, statements or contracts made by any Hot Tub Dealer/Contractor.

Note: Color samples shown are representations of actual color, but are for identification only. Because the color may vary, Dynasty Spas does not guarantee that this color will be an exact match to the image shown.

The Bluetooth® word mark and logo are registered trademarks owned by Bluetooth SIG, Inc. Other trademarks and trade names are those of their respective owners



SUPERIOR SPAS



STAINLESS STEEL JETS



WATERFALLS



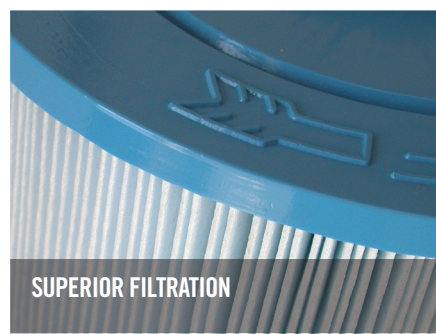
FOUNTAIN JETS



BLUETOOTH™ AUDIO SYSTEM



RMAX® INSULATION PANELS



SUPERIOR FILTRATION



# DALLAS COMPACT

## BASIC SPECIFICATIONS

Size:	152 x 213 x 85cm
Jets:	24
Litres:	852
Pump:	1 Gecko™ EU / 3.0 HP
Electrical:	13 amp
Water Flow:	225 GPM / 110 GPM

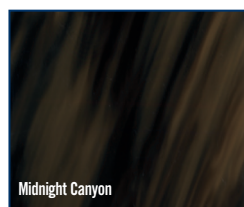
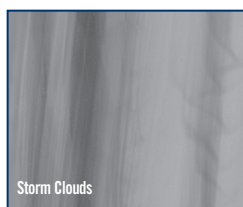
## CAPACITY



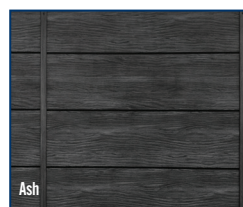
## STANDARD FEATURES

Waterway™ Orion Jets	Grey Padded Headrests
Gecko™ YE Class Pack	Bluetooth™ Audio System with Transducers
Gecko™ K362 Digital Topside Control	Heater
SimpleClear UV-C WP	Waterfalls / Fountain Jets
2KW Heater	"Elite" Ash Maintenance Free Skirting
Gecko™ EU Pump	Single Master Massage Footwell Jet
4.6M² Filtration	ABS Bottom-Wrap
RMAX® Insulation Panels	10-5cm Cover - Standard

### Acrylic Color Options



### Elite Skirting



Lucite SPA



Waterway

Dynasty Spas reserves the right to change product selections and/or make product modifications. Your Dynasty Spa Dealer/Contractor is an independent business person and not an agent or employee of Dynasty Spas or any of its subsidiaries. Neither Dynasty Spas nor its subsidiaries accept any responsibility for any representations, statements or contracts made by any Hot Tub Dealer/Contractor.

Note: Color samples shown are representations of actual color, but are for identification only. Because the color may vary, Dynasty Spas does not guarantee that this color will be an exact match to the image shown.

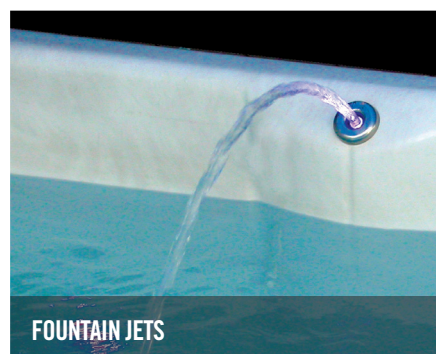
The Bluetooth® word mark and logo are registered trademarks owned by Bluetooth SIG, Inc. Other trademarks and trade names are those of their respective owners



STAINLESS STEEL JETS



WATERFALLS



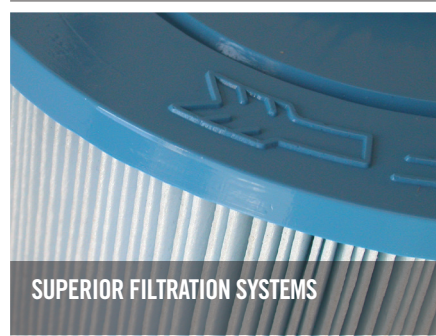
FOUNTAIN JETS



BLUETOOTH™ AUDIO SYSTEM

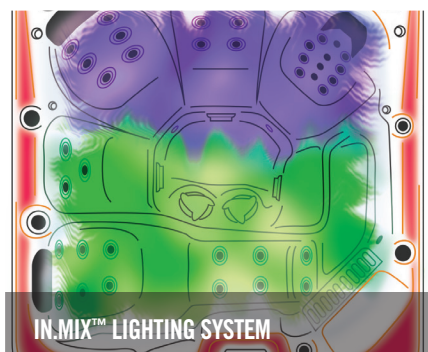
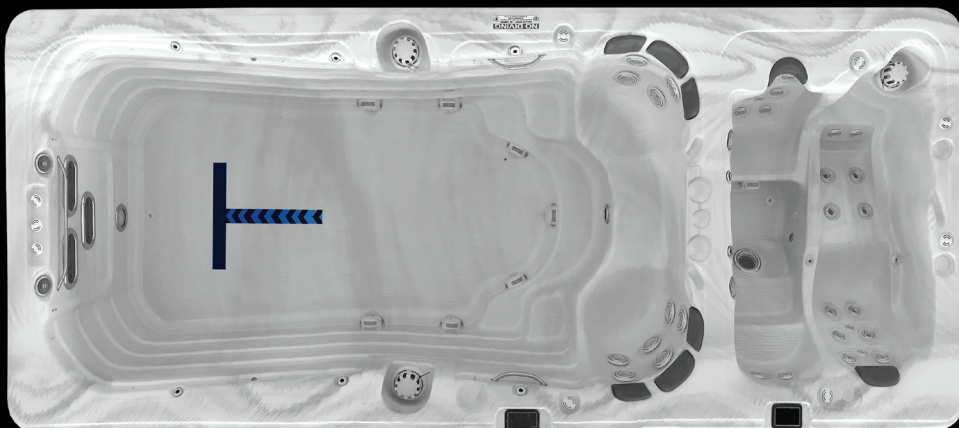


RMAX® INSULATION PANELS



SUPERIOR FILTRATION SYSTEMS





# SUPERIOR PRO SWIM 19'

## BASIC SPECIFICATIONS

Size:	233 x 569 x 140cm
Jets:	39
Litres:	7949
Pumps:	5 Gecko™ EU / 3.0 HP
Electrical:	Two - 32 amp
Water Flow:	225 GPM / 110 GPM

## CAPACITY AND



AQUATIC EXERCISE EQUIPMENT

## STANDARD FEATURES

3 Illuminated River Jets	Illuminated Cup Holders
Underwater Lights	2 - Simple Clear UV-C WP
Digital Topside Controls - K-1000 @2	Elite Maintenance Free Skirting
8 Adults (7 Seats/1 Swimmer)	Treated Plywood Bottom
Heaters	Rowing/Exercise/Tether System
13.9 SqM2 Filtration System	Grey Pillows
3 Stainless Steel Grab Bars	In.Stream™ Audio System
Illuminated Fountain Jets	w / Four 4" Marine Grade Speakers
in.Mix™ LED Lighting	 <b>Bluetooth</b>
RMAX® Insulation	Swim Coach - Multi Programmable Workout

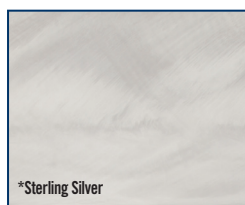
## OPTIONAL FEATURES

Circulation Pump
in.Touch™ System
SwimDek™ Flooring Pad
<b>WHITE JET PKG.</b>
Illuminated White Orion Jets
White Orion and SS Jets
White Suctions
Ultra Light Gray Pillows

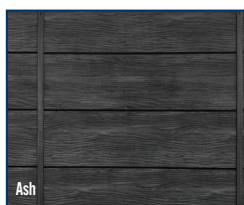


HIGH POWERED RIVER JETS

### Acrylic Color Options



### Elite Skirting



Lucite SPA



Waterway

Dynasty Spas reserves the right to change product selections and/or make product modifications. Your Dynasty Spa Dealer/Contractor is an independent business person and not an agent or employee of Dynasty Spas or any of its subsidiaries. Neither Dynasty Spas nor its subsidiaries accept any responsibility for any representations, statements or contracts made by any Hot Tub Dealer/Contractor.

Note: Color samples shown are representations of actual color, but are for identification only. Because the color may vary, Dynasty Spas does not guarantee that this color will be an exact match to the image shown.

The Bluetooth® word mark and logo are registered trademarks owned by Bluetooth SIG, Inc. Other trademarks and trade names are those of their respective owners



SUPERIOR SPAS



RMAX® INSULATION PANELS



USER FRIENDLY, DIGITAL CONTROLS



# SUPERIOR PRO SWIM 17'

## BASIC SPECIFICATIONS

Size:	233 x 505 x 140cm
Jets:	30
Litres:	6957
Pumps:	4 Gecko™ EU / 3.0 HP
Electrical:	32 amp
Water Flow:	225 GPM / 110 GPM

## CAPACITY



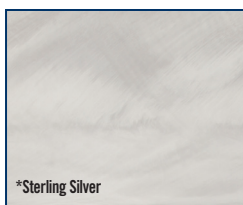
## STANDARD FEATURES

3 Illuminated River Jets	Illuminated Cup Holders
Underwater Lights	SimpleClear UV-C WP
Digital Topside Control - K-1000	Elite Maintenance Free Skirting
5 Adults (4 Seats/1 Swimmer)	Treated Plywood Bottom
Heater	Rowing/Exercise/Tether System
9.29 SqM2 Filtration System	Grey Pillows
3 Stainless Steel Grab Bars	In.Stream™ Audio System
6 Illuminated Fountain Jets	w / Four 4" Marine Grade Speakers
in.Mix™ LED Lighting	 <b>Bluetooth</b>
RMAX® Insulation	Swim Coach - Multi Programmable Workout

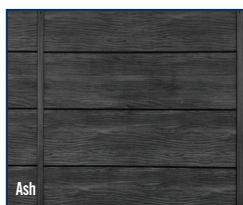
## OPTIONAL FEATURES

Circulation Pump
in.Touch™ System
SwimDek™ Flooring Pad
<b>WHITE JET PKG.</b>
Illuminated White Orion Jets
White Orion and SS Jets
White Suctions
Ultra Light Gray Pillows

### Acrylic Color Options



### Elite Skirting



Lucite SPA



Waterway

Dynasty Spas reserves the right to change product selections and/or make product modifications. Your Dynasty Spa Dealer/Contractor is an independent business person and not an agent or employee of Dynasty Spas or any of its subsidiaries. Neither Dynasty Spas nor its subsidiaries accept any responsibility for any representations, statements or contracts made by any Hot Tub Dealer/Contractor.

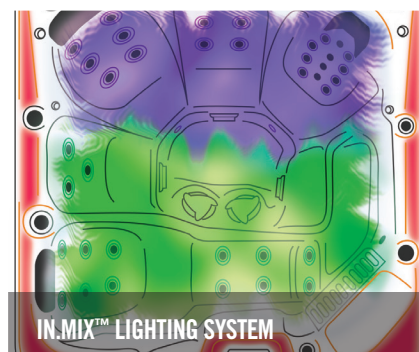
Note: Color samples shown are representations of actual color, but are for identification only. Because the color may vary, Dynasty Spas does not guarantee that this color will be an exact match to the image shown.

The Bluetooth® word mark and logo are registered trademarks owned by Bluetooth SIG, Inc. Other trademarks and trade names are those of their respective owners



SUPERIOR SPAS

ILLUMINATED STAINLESS STEEL JETS



IN.MIX™ LIGHTING SYSTEM



AQUATIC EXERCISE EQUIPMENT



HIGH POWERED RIVER JETS

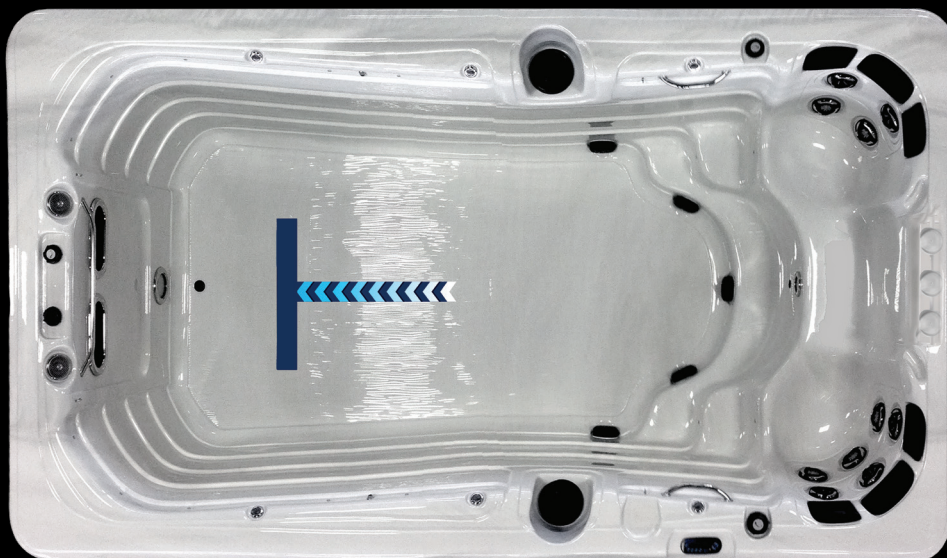


RMAX® INSULATION PANELS



USER FRIENDLY, DIGITAL CONTROLS





# SUPERIOR PRO SWIM 13'

## BASIC SPECIFICATIONS

Size:	233 x 406 x 140cm
Jets:	10
Litres:	5765
Pumps:	3 Gecko™ EU / 3.0 HP
Electrical:	32 amp
Water Flow:	225 GPM / 110 GPM

## CAPACITY



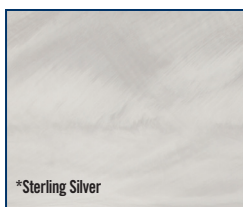
## STANDARD FEATURES

2 Illuminated River Jets	SimpleClear UV-C WP
Underwater Light	Elite Maintenance Free Skirting
Digital Topside Control - K-1000	Treated Plywood Bottom
4 Adults (3 Seats/1 Swimmer)	Rowing/Exercise/Tether System
Heater	Grey Pillows
9.29 SqM2 Filtration System	In.Stream™ Audio System
3 Stainless Steel Grab Bars	w / Four 4" Marine Grade Speakers
6 Illuminated Fountain Jets	<b>Bluetooth</b>
in.Mix™ LED Lighting	Swim Coach - Multi Programmable Workout
RMAX® Insulation	

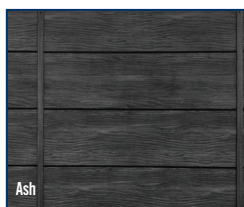
## OPTIONAL FEATURES

Circulation Pump
in.Touch™ System
Exercise / Rowing & Swim Tether
SwimDek™ Flooring Pad
<b>WHITE JET PKG.</b>
Illuminated White Orion Jets
White Orion and SS Jets
White Suctions
Ultra Light Gray Pillows

### Acrylic Color Options



### Elite Skirting



Lucite SPA



Waterway

Dynasty Spas reserves the right to change product selections and/or make product modifications. Your Dynasty Spa Dealer/Contractor is an independent business person and not an agent or employee of Dynasty Spas or any of its subsidiaries. Neither Dynasty Spas nor its subsidiaries accept any responsibility for any representations, statements or contracts made by any Hot Tub Dealer/Contractor.

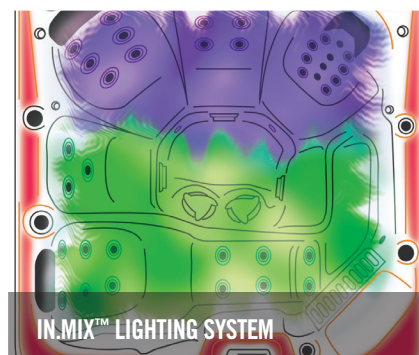
Note: Color samples shown are representations of actual color, but are for identification only. Because the color may vary, Dynasty Spas does not guarantee that this color will be an exact match to the image shown.

The Bluetooth® word mark and logo are registered trademarks owned by Bluetooth SIG, Inc. Other trademarks and trade names are those of their respective owners



SUPERIOR SPAS

### ILLUMINATED STAINLESS STEEL JETS



### IN.MIX™ LIGHTING SYSTEM



### AQUATIC EXERCISE EQUIPMENT



### HIGH POWERED RIVER JETS

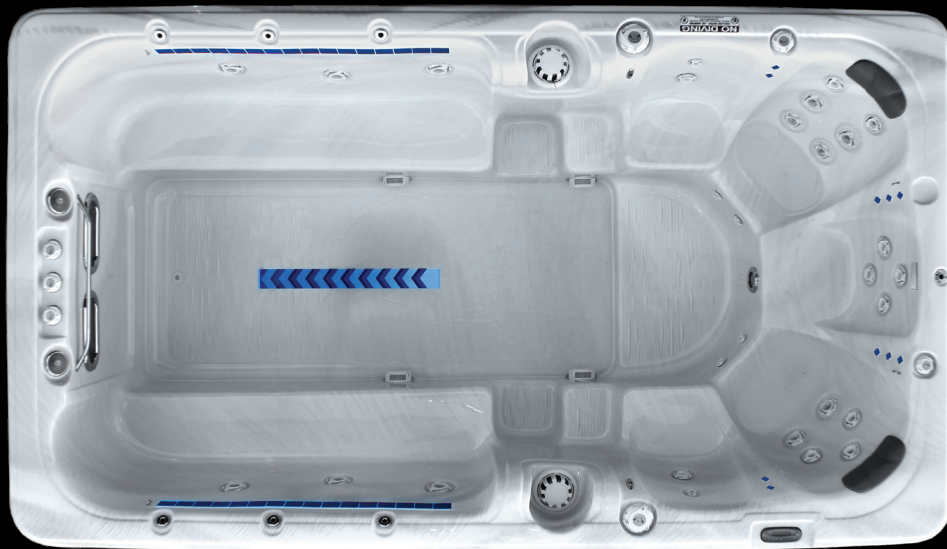


### RMAX® INSULATION PANELS



### USER FRIENDLY, DIGITAL CONTROLS





# SUPERIOR PARTY SWIM 13'

## BASIC SPECIFICATIONS

Size: 233 x 406 x 129cm  
 Jets: 29  
 Litres: 4107  
 Pumps: 2 Gecko™ EU / 3.0 HP  
 Electrical: 32 amp  
 Water Flow: 225 GPM / 110 GPM

## CAPACITY



## STANDARD FEATURES

2 Illuminated River Jets  
 LED Footwell Light  
 Digital Topside Control - K-506  
 8 Adults (7 Seats/1 Swimmer)  
 9.29 SqM2 Filtration System  
 6 Illuminated Fountain Jets  
 RMAX® Insulation

Stainless Steel Grab Bar  
 Heater  
 SimpleClear UV-C WP  
 Elite Maintenance Free Skirting  
 Treated Plywood Bottom  
 Grey Pillows

## OPTIONAL FEATURES

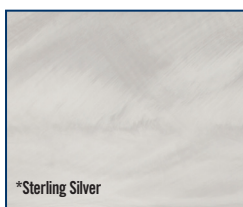
Circulation Pump  
 \*Illuminated Jets  
 in.Touch™ System  
 Bluetooth™ Audio & Marine Speakers  
 Exercise / Rowing & Swim Tether  
 SwimDek™ Flooring Pad

### WHITE JET PKG.

White Orion Jets  
 Toprail LED Lighting  
 White Suctions  
 White Weir Door

(\*White Jets when the illuminated jet option is chosen)

### Acrylic Color Options



### Elite Skirting



Lucite SPA



Waterway

Dynasty Spas reserves the right to change product selections and/or make product modifications.  
 Your Dynasty Spa Dealer/Contractor is an independent business person and not an agent or employee of Dynasty Spas or any of its subsidiaries. Neither Dynasty Spas nor its subsidiaries accept any responsibility for any representations, statements or contracts made by any Hot Tub Dealer/Contractor.

Note: Color samples shown are representations of actual color, but are for identification only. Because the color may vary, Dynasty Spas does not guarantee that this color will be an exact match to the image shown.

The Bluetooth® word mark and logo are registered trademarks owned by Bluetooth SIG, Inc.  
 Other trademarks and trade names are those of their respective owners



SUPERIOR SPAS

OPTIONAL ILLUMINATED JETS

FOUNTAIN JETS

OPTIONAL AQUATIC EXERCISE EQPT.

HIGH POWERED RIVER JETS



RMAX® INSULATION PANELS



USER FRIENDLY, DIGITAL CONTROLS