



# CHICAGO DUAL

## BASIC SPECIFICATIONS

Size:	234 x 234 x 91cm
Jets:	43
Litres:	1495
Pumps:	3 Gecko™ EU / 3.0 HP
Electrical:	32 amp
Water Flow:	225 GPM / 110 GPM

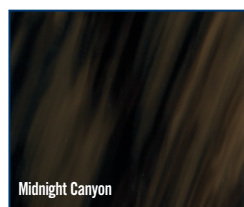
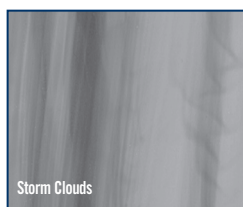
## CAPACITY



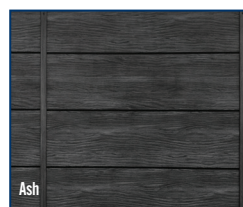
## STANDARD FEATURES

Waterway™ Illuminated Orion Jets	Gecko in.Stream™ Audio System with Transducers
Gecko™ YT Class Pack	Heater
Gecko™ K1000 Digital Topside Control	Waterfalls
SimpleClear UV-C WP	"Elite" Ash Maintenance Free Skirting
Gecko in.Mix™ LED Lighting	Illuminated Skirt Corners
Gecko™ EU Pumps	Dual Master Massage Footwell Jets
9.29M² Filtration	ABS Bottom-Wrap
RMAX® Insulation Panels	15-10cm Cover - Standard
Grey Padded Headrests	

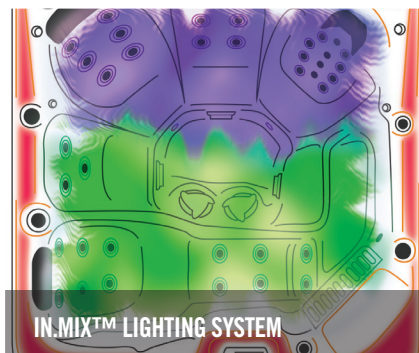
### Acrylic Color Options



### Elite Skirting



ILLUMINATED STAINLESS STEEL JETS



IN.MIX™ LIGHTING SYSTEM



AIR & WATER DIVERTERS



**Bluetooth™**

IN.STREAM™ AUDIO SYSTEM



RMAX® INSULATION PANELS



USER FRIENDLY, DIGITAL CONTROLS



Lucite SPA



Waterway

Dynasty Spas reserves the right to change product selections and/or make product modifications. Your Dynasty Spa Dealer/Contractor is an independent business person and not an agent or employee of Dynasty Spas or any of its subsidiaries. Neither Dynasty Spas nor its subsidiaries accept any responsibility for any representations, statements or contracts made by any Hot Tub Dealer/Contractor.

Note: Color samples shown are representations of actual color, but are for identification only. Because the color may vary, Dynasty Spas does not guarantee that this color will be an exact match to the image shown.

The Bluetooth® word mark and logo are registered trademarks owned by Bluetooth SIG, Inc. Other trademarks and trade names are those of their respective owners



**SUPERIOR SPAS**